

Specifications

DE

Series
30 pound
50 pound
75 pound
120 pound
170 pound

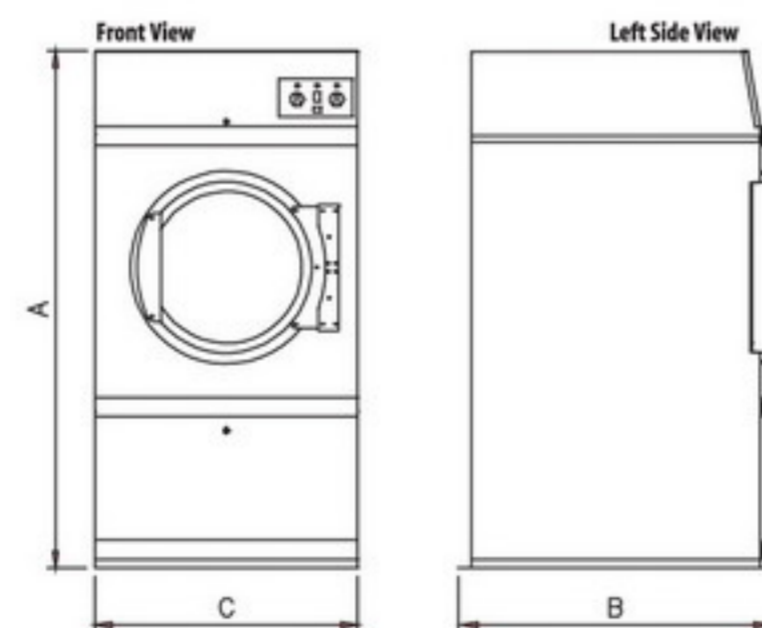


Standard Features :

- Push to start button
- Manual operated timers
- Removable top (some models)
- 4 cycle temperature selector
- Heavy duty drive system
- Large loading door
- Cool down
- Temperature limit switches
- Lint filter signal

Optional Features :

- Microprocessor control
- Reversing Cylinder (standard on DE120 and DE 170)
- Rotational sensor
- Steam heating, Electrical heating, and Gas heating
- Reversible door
- Stainless steel Cylinder
- Stainless steel front
- Air re-circulating system



Specification and Design subject to change without notice
Additional options : Consult factory or distributor



MODEL	Metric	US	DE 30	DE 50	DE 75	DE 120	DE 170
Maximum Capacity (dry weight)	kg.	lbs.	13.6 (30)	22.7 (50)	34 (75)	54.4 (120)	77.1 (170)
Basket Diameter	mm.	inch	762 (30)	922 (36.3)	922 (36.3)	1130 (44.5)	1308 (51.5)
Basket Depth	mm.	inch	762 (30)	762 (30)	910 (35.8)	1076 (42.4)	1080 (42.5)
Basket Volume	cu.m	cu.ft	0.35 (12.4)	0.51 (18)	0.61 (21.5)	1.08 (38.1)	1.45 (51.2)
Basket Motor	kW	HP	0.373 (1/2)	0.56 (3/4)	0.56 (3/4)	0.75 (1)	1.5 (2)
Blower Motor (Gas / Steam)	kW	HP	-	0.56 (3/4)	0.75 (1)	2.24 (3)	5.5 (7.5)
Cabinet size (WxDxH)							
A - Machine Height at full	mm.	inch	1835 (72.25)	1920 (75.6)	1920 (75.6)	2084 (82)	2380 (93.7)
B - Machine Depth	mm.	inch	1135 (44.7)	1150 (45.3)	1270 (50)	1660 (65.4)	1690 (66.5)
C - Machine Width	mm.	inch	800 (31.5)	973 (38.3)	973 (38.3)	1200 (47.2)	1406 (55.4)
Net Weight (approx.)	kg.	lbs.	250 (551)	318 (701)	363 (800)	750 (1650)	1000 (2205)
GAS :							
Air Flow	cmm	cfm	17 (600)	21.25 (750)	25.48 (900)	62.29 (2200)	113.26 (4000)
Heat Input	kcal/hr	btu/hr	22680 (90000)	32760 (130000)	50400 (200000)	94500 (375000)	138600 (550000)
Gas Inlet	mm.	inch	12.7 (1/2")	12.7 (1/2")	19 (3/4")	25.4 (1")	25.4 (1")
Exhaust Duct	mm.	inch	203 (8)	203 (8)	203 (8)	305 (12)	406 (16)
Shipping Weight (approx.)	kg.	lbs.	273 (602)	341 (752)	386 (851)	772 (1702)	1045 (2304)
STEAM :							
Air Flow	cmm ²	cfm	17 (600)	21.25 (750)	25.48 (900)	62.29 (2200)	113.26 (400)
Steam Consumption	BHP	BHP	2.6	4.6	6.5	13	19
Operating Pressure	bar	Psi.	5.6-8.79 (80-125)	5.6-8.79 (80-125)	5.6-8.79 (80-125)	5.6-8.79 (80-125)	5.6-8.79 (80-125)
Steam supply	mm.	inch	19 (3/4")	19 (3/4")	19 (3/4")	25.4 (1")	25.4 (1")
Steam return	mm.	inch	12.7 (1/2")	12.7 (1/2")	12.7 (1/2")	19 (3/4")	25.4 (1")
Exhaust Duct	mm.	inch	203 (8)	203 (8)	203 (8)	305 (12)	406 (16)
Shipping Weight (approx.)	kg.	lbs.	282 (622)	350 (772)	395 (871)	818 (1804)	1114 (2456)
ELECTRIC :							
Air Flow	cmm	cfm	17 (600)	21.25 (750)	25.48 (900)	N/a	N/a
Shipping Weight (approx.)	kg.	lbs.	275 (606.4)	345 (760.7)	390 (860.0)	N/a	N/a

DE Series



Economy High Efficiency Dryers

The Image DE Series - Economy High Efficiency Dryers for General Laundry Applications and Small to Medium Size On-Premise Laundries

Discover the Benefits - Safe Reliable and Simple to use at an Affordable Price

The DE Series dryer offers a wide selection of capacities, heating alternatives and control systems. It is the ideal dryer for self-service laundries and medium to large size professional laundries. The dryers will boost your productivity and at the same time save energy. You will get more for every Btu or kilowatt used. The robust design and the ergonomically located control panels will provide a long life of tough handling. The large doors on all models make loading and unloading easy.

Built to Last Rugged Construction Insulated for Energy Efficiency

The DE Series features a sturdy cyclinder design with double sealed bearings and a quiet belt drive. The pulleys are cast iron for durability. A heavy base frame protects the machine during shipping and installation. The painted totally enclosed cabinet provides excellent protection against corrosion and utilizes heavy gauge steel and welded design that makes it stronger than any other dryer on the market. The cabinet is a fully enclosed design with insulation that improves efficiency by capturing radiant heat and retaining it inside the dryer. It also lowers the noise level and improves the working conditions inside your laundry. The drying cylinder is galvanized steel, or optionally, all stainless steel 304 (18/8).



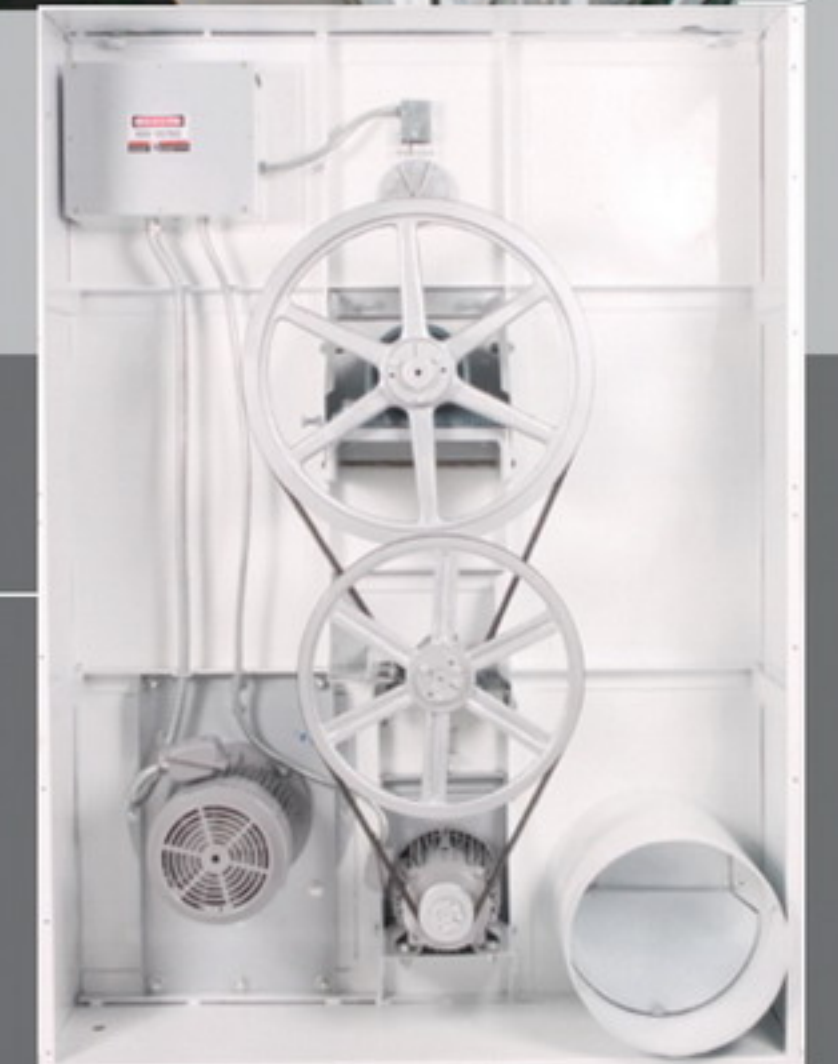
Microprocessor Control

As an option, all dryers can be provided with our flexible and advanced microprocessor. With the touch of a button you have total control over the dryer for optimum drying. The microprocessor monitors the temperatures, drying action and the performance with unsurpassed accuracy to ensure trouble free operation. The alphanumeric display is large and easy to read. A cool down and anti wrinkle feature keeps the machine in a cool down mode after the cycle has finished. The computer helps enhance safety in the laundry by verifying airflow and monitoring the temperature sensor and door.



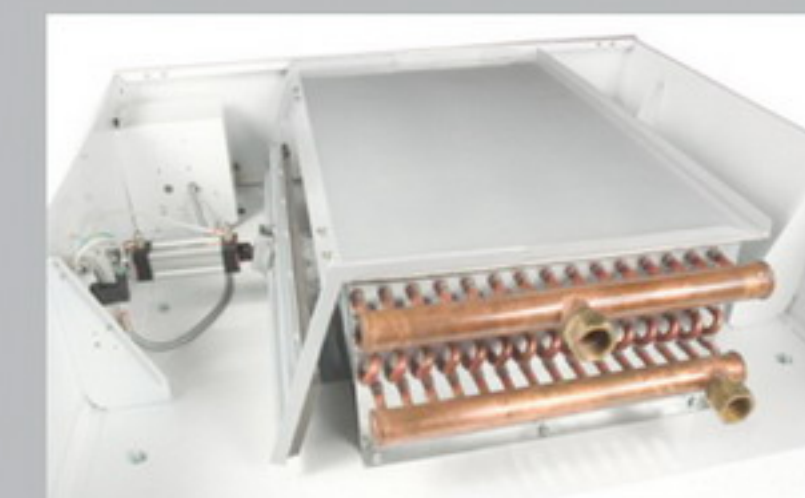
Drive Motors

All Motors are totally enclosed and fan cooled to prevent lint build-up. To prevent tangling, a reversing cyclinder is standard on larger dryers.



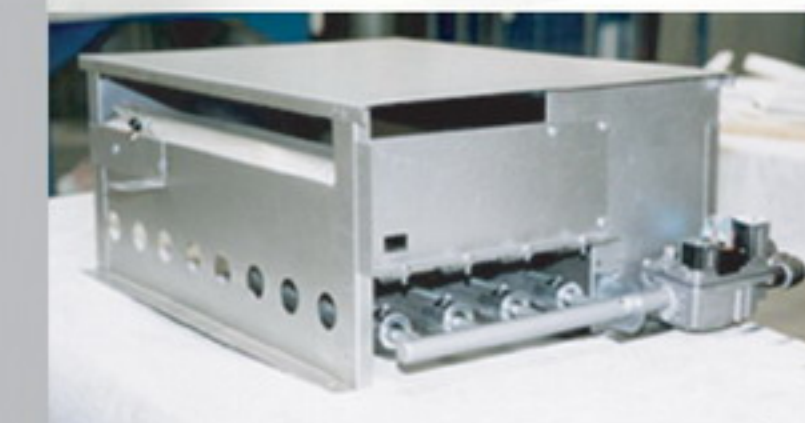
Steam Heating

Most steam-heated versions are provided with a damper that allows the coil to stay constantly charged, eliminating repeated expansion and contracting. When the damper is open the air immediately passes through the already hot coil, providing instant heat to start the drying process. When the damper is closed, ambient air is drawn directly into the cylinder allowing for rapid cool down.



Gas Heating

The gas-heated models are extremely efficient and boost productivity. The instantaneous ignition of the burners helps to achieve desired temperature quickly and efficiently. Heat is also evenly distributed as the airflow is directed into the cylinder with minimal loss. Felt seals are provided to reduce loss of air from the drying cylinder.



Dual Timer Control

The dual timer control features two timers - 0-60 minutes for drying time, and 0-15 minutes cooling down to minimize wrinkling. The dryer activates when the push-to-start button is pressed, and stops when time expires or the door is opened. Indicator lights keep you informed of the cycle status and when the lint filter needs attention.



Large Strong Door with Gasketless Door Glass

The large door opens 180 degrees making loading and unloading easy. The door glass is attached to the door without a gasket providing a long lasting door that offers security and low maintenance over the life of the machine. The door is provided with a safety switch that will stop the machine when the door is opened. A simple magnetic latch keeps the door closed during operation.



Lint Filter and Lint Compartment

A large lint screen or a lint drawer on larger models makes maintenance easy. It is accessible from the front and located close to the exhaust fan, preventing fan clog up and eliminating fan vibrations. The lint filter is efficient and provides good airflow that reduces the energy consumption. An indicator lamp in the control panel lights when it is time to clean the lint compartment.

